



The Pink Room, with its period style and abundance of natural light, is the perfect space for a small meeting or event.

Interconnecting to the larger Argyll Room, the two venues provide the perfect combination for a reception followed by a private lunch or dinner, or a break out room during business meetings.

HIGHLIGHTS

- Contemporary design with original marble fireplace
- Can be hired semi-privately, privately or linked with The Argyll Room
- Selection of meeting and private dining packages
- Bespoke menus from The Game Bird
- Natural daylight

KEY FACTS

Dimensions: 6.26m x 3.81m / 20.5 x 12.4ft

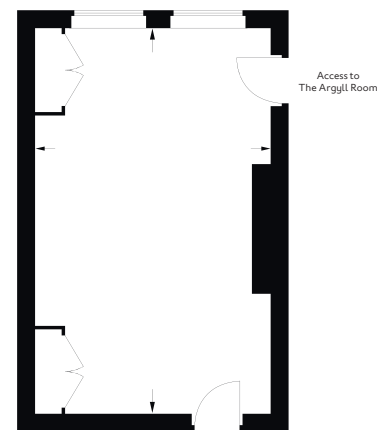
Total Area: 23m² / 247 ft²

Ceiling height: 3.2m

Adjoining Room: The Argyll Room

Location: Ground floor

LAYOUT	CAPACITY
Oval Table	10
Round Table	8
U-Shape	-
Boardroom	8
Theatre	10
Cabaret	6
Classroom	8
Standing	14



thestaffordlondon.com

Twitter: @StaffordLondon Facebook: TheStaffordLondon Instagram: thestaffordlondon

16-18 St James's Place London SW1A 1NJ United Kingdom

Phone: +44 (0)20 7518 1104 Email: meetingsandevents@thestaffordlondon.com

LEGEND

Preferred
HOTELS & RESORTS